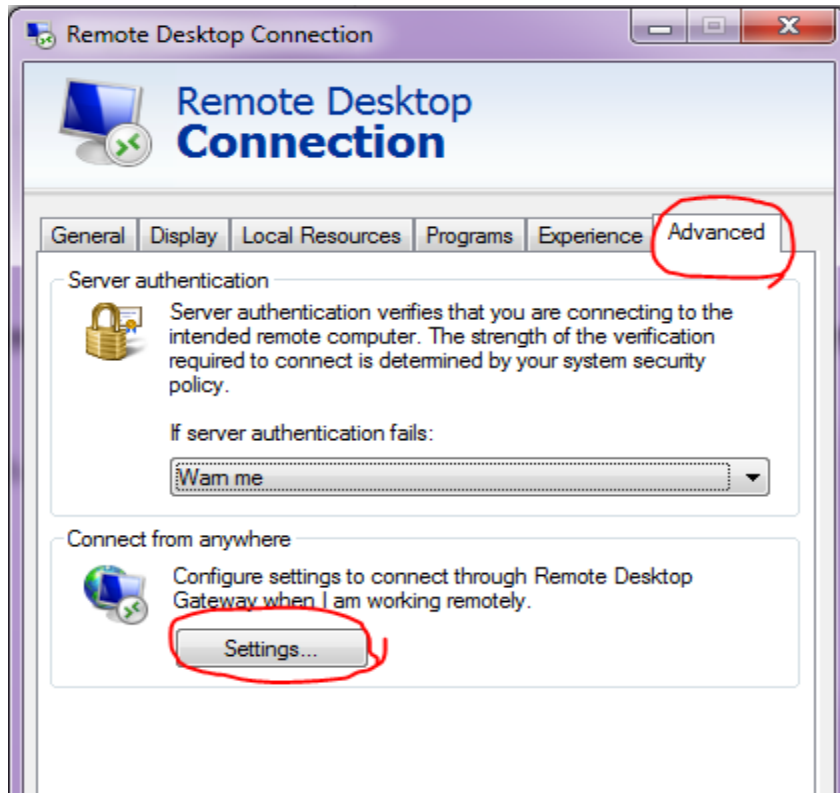


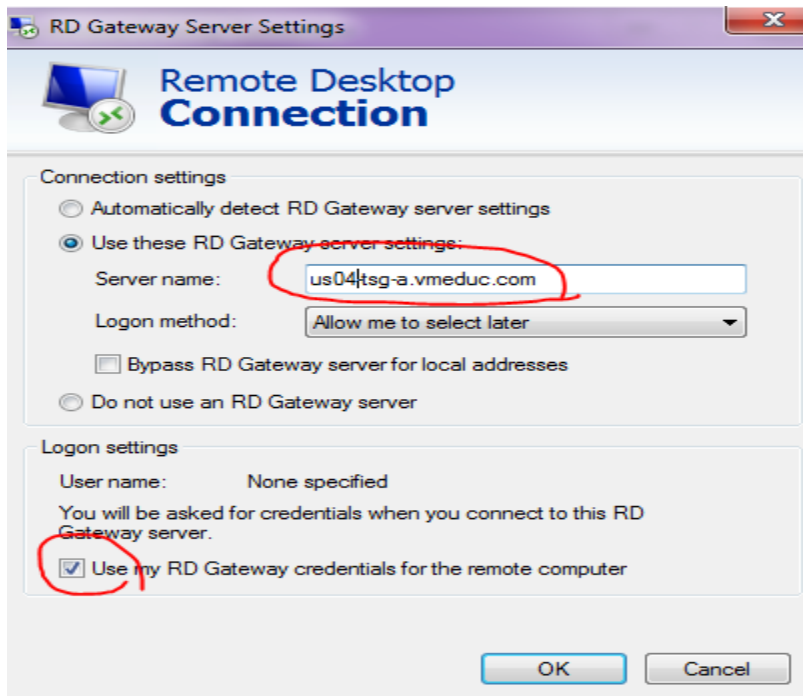
# HOW TO CONNECT VMWARE LAB ENVIRONMENT FROM RESTRICTED ONSITE ENVIRONMENT

\*\* Using Microsoft terminal Gateway Server

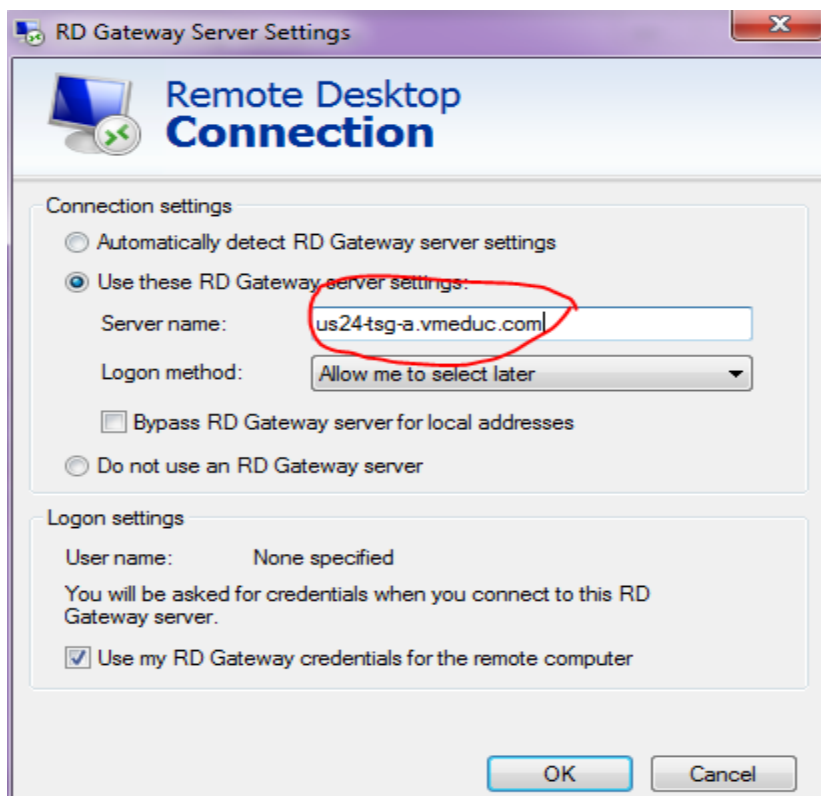
1. Launch Microsoft RDP Client go to Advanced >Setting



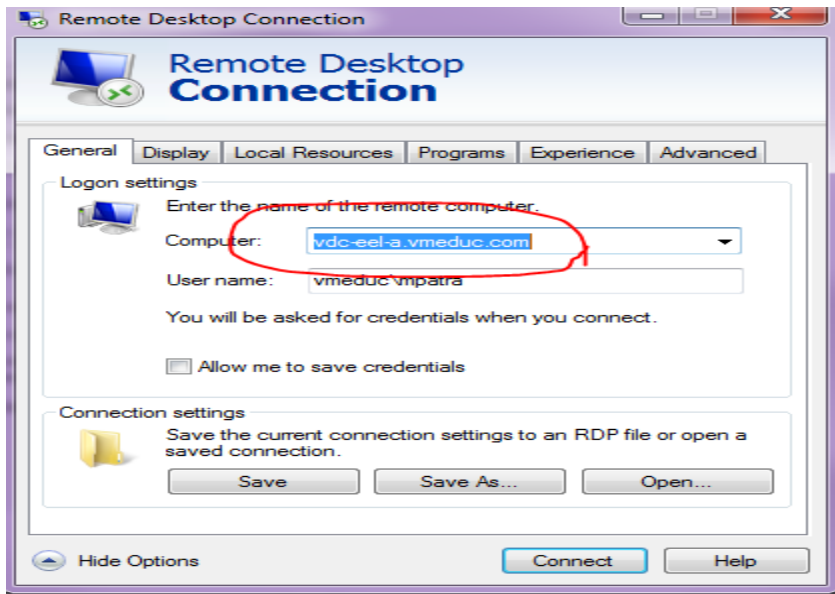
Input the RD gateway server settings. If you are connecting a **kit name** starts from A to M (ant, bat, grape, etc.) connect **us04-tsg-a.vmeduc.com** or **us04-tsg-b.vmeduc.com** or **us04-tsg-c.vmeduc.com** or **us04-tsg-d.vmeduc.com** click ok



Input the RD gateway server settings. If you are connecting a kit name starts from N to Z (newt, yak, zinc, etc.) connect **us24-tsg-a.vmeduc.com** or **us24-tsg-b.vmeduc.com** or **us24-tsg-c.vmeduc.com** or **us24-tsg-d.vmeduc.com** click ok



After clicking ok go to general tab enter your kit name TS server



Click on the general tab, enter your kitname TS server